

# Tiger Salamander

## *Ambystoma tigrinum*



Subvertical Ramps: 41

Branched Ramps: 1

U-Shaped: 4

W-Shaped: 4

J-Shaped: 1

Y-Shaped: 3



TS3-2-1B  
AT1\_SR



TS3-3-1(T)  
AT2\_SR





TS3-3-2B  
AT3\_SR



TS4-1-1A  
AT4\_SR



TS4-3-1  
AT5\_SSR



TS5-1-1A  
AT6\_SR





TS5-1-1B  
AT7\_SR



TS5-2-2D  
AT8\_SR



TS6-1-1G  
AT9\_SR

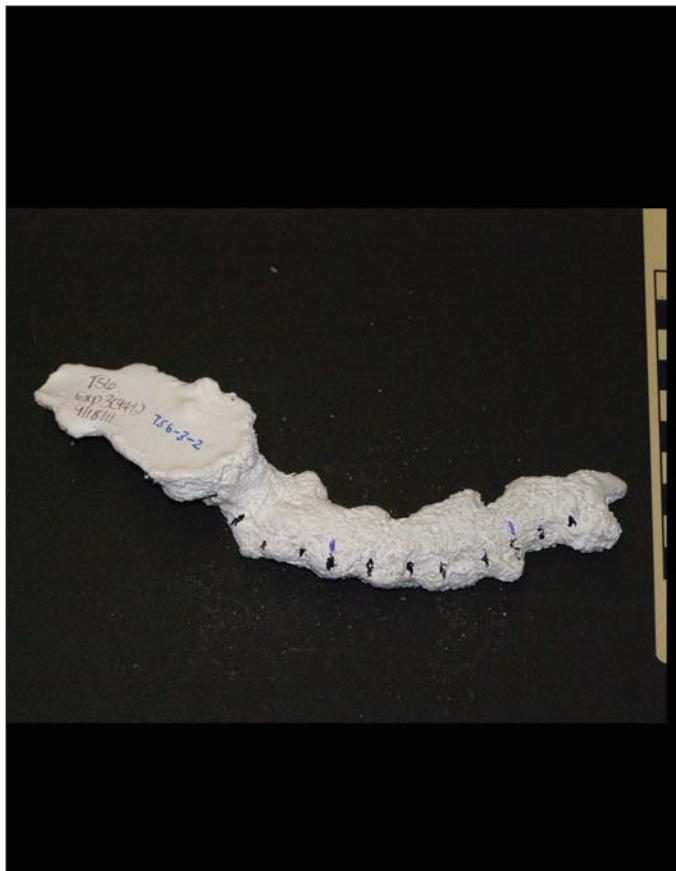


TS6-1-1H  
AT10\_SR





TS6-3-1(T)  
AT11\_SR



TS6-3-2  
AT12\_SR



TS7-2-1  
AT13\_SR



TS7-2-2  
AT14\_SR





TSB1  
AT15\_SR



TS2-1-2  
AT16\_SSR



TS2-2-1(T)  
AT17\_SR

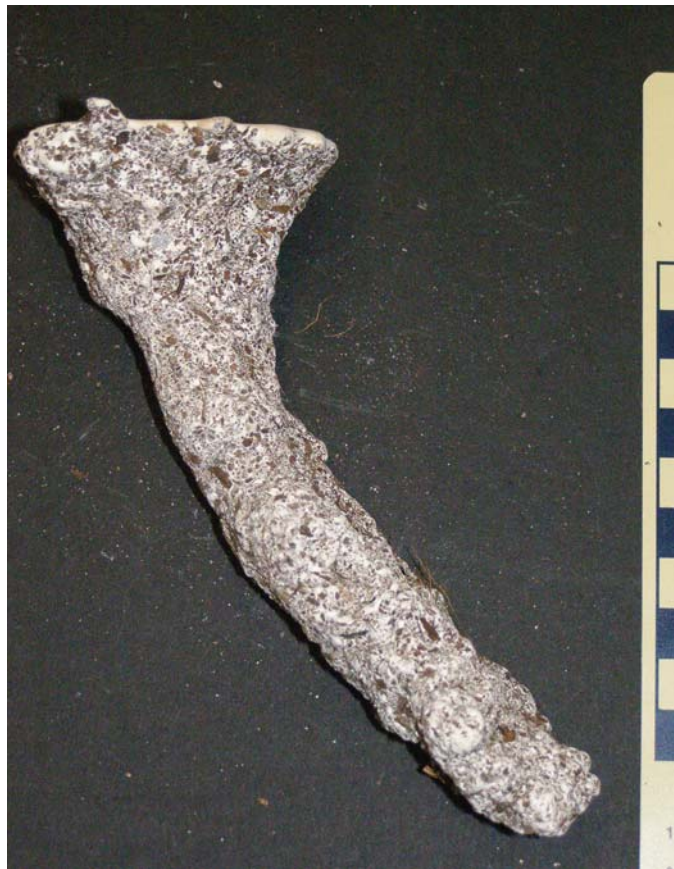


TS2-2-2  
AT18\_SR





TS2-3-1  
AT19\_SR



TS2-3-2  
AT20\_SR



TSB3  
AT21\_SR



TSB7  
AT22\_SR





TS3-1-2B  
AT23\_SR



TS3-2-1A  
AT24\_SR



TS3-3-2A  
AT25\_SR



TSB2  
AT26\_SR





TS4-1-1C  
AT27\_SR



TS4-1-2  
AT28\_SR



TS4-2-1  
AT29\_SR



TS4-2-2(T)  
AT30\_SR





TS5-1-2(T)  
AT31\_SR



TS5-2-2C  
AT32\_SR



TS5-3-1  
AT33\_SR



TS5-3-2  
AT34\_SR





TS6-1-1C  
AT35\_SR



TS6-2-1B  
AT36\_SR



TS6-2-2  
AT37\_SR



TS7-1-1  
AT38\_SR





TS7-1-1  
AT39\_SR



TS7-3-1  
AT40\_SR



TS7-3-2  
AT41\_SR



TS6-2-1A  
AT42\_BR





TS3-1-1  
AT43\_US



TS3-2-2  
AT44\_US



TS6-1-1E  
AT45\_US



TS6-1-2  
AT46\_US





TS2-1-1  
AT47\_WS



TS4-3-2  
AT48\_WS



TSB4  
AT49\_WS



TS3-1-2A  
AT50\_WS





TSB9  
AT51\_JS



TSB5  
AT52\_YS



TSB6  
AT53\_YS



TSB8  
AT54\_YS