

# North American Millipede

## *Narceus americanus*



Subvertical Shafts: 13

Vertical Shafts: 7

Helical Burrows: 5

O-Shaped: 4



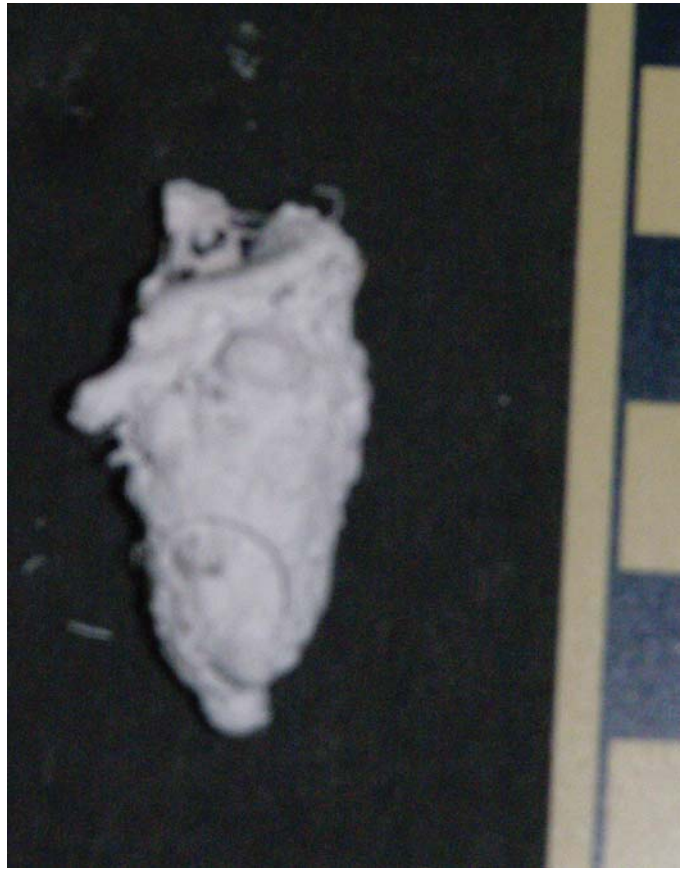
NA32  
NA1\_SS



NA23  
NA2\_SS



NA25A  
NA3\_SS



NA21A  
NA4\_SS



NA21B  
NA5\_SS



NA21C  
NA6\_SS



NA30B  
NA7\_SS



NA30D  
NA8\_SS



NA21D  
NA9\_SS



NA24  
NA10\_SS



NA21E  
NA11\_SS



NA26A  
NA12\_SS



NA30E  
NA13\_SS



NA28  
NA14\_VS



NA29C  
NA15\_VS



NA30A  
NA16\_VS



NA30C  
NA17\_VS



NA33A  
NA18\_VS



NA33B  
NA19\_VS



NA30F  
NA20\_VS



NA1  
NA21\_HB



NA25B  
NA22\_HB



NA33C  
NA23\_HB



NA29B  
NA24\_HB



NA21F  
NA25\_HB



NA29A  
NA26\_OS



NA26B  
NA27\_OS



NA31A  
NA28\_OS



NA31B  
NA29\_OS